



*Cast Metal Letters,
Plaques & Graphics
by
Metal Arts*

*Retail Price Catalog
Valid June 2009*

Establishing Trust is Important

Metal Arts was established seventy-five years ago in Milwaukee, Wisconsin, in a small two-story foundry and finishing factory. In the beginning casting aluminum letters and seals for the United States Postal Service, that soon expanded to bronze plaques and letters for business, government and organizations. Metal Arts had become a successful business in Milwaukee, employing fifteen skilled craftsmen and artisans.

1968 was a year of big changes for Metal Arts. It was purchased by L & H Mfg. Co. and relocated to Mandan, North



Dakota. Some of the craftsmen followed the foundry to the new location and passed along the knowledge of quality manufacturing to the new employees.

The architectural signage industry has seen many changes over the past 40 plus years. Metal Arts has kept pace with those changes, expanding in all facets of the

business and adopting new technologies. Metal Arts is always searching for better ways to design, cast, and finish the products they produce. Metal Arts has grown to over forty "dedicated" employees, shipping products throughout the United States and around the world.

A quality product is the bottom line and only the finest cast ingot material available in aluminum, bronze and brass are used. Good quality material does "make a difference."

Trust, dedication and making a difference are not just words to us, it is the code we work by. We "trust" the products will satisfy your needs, and are "dedicated" to manufacturing excellence. Metal Arts strives each day to "make a difference" in satisfying our customers needs.

This is the first time we have combined our product catalog and our price book into one easy to use publication. You will find in this catalog our large selection of standard style cast metal letters, along with pricing for custom letters and graphics. In the plaque section you will see sample plaques with a easy to use price structure, including the guidelines needed to place an order with Metal Arts.



Artwork On Disk

With our technology, Metal Arts is able to accept artwork on a computer disk. This will insure our customers that their project is completed to satisfaction, and in a timely manner. If you are unable to provide us with a computer disk, we will complete your project from your layout or camera ready artwork.

We except most popular file formats DXF, EPS, Illustrator and Freehand. Call for versions and other related information. Files can be provided on CD-ROM's, Zip Disk, High Density Floppies and via e-mail.

In some cases artwork may have to be modified to achieve the desired result in casting. Avoid using any graphics that cannot be edited in your file. Convert all fonts to paths. Any fonts that are not converted to paths, should be included with the file. We do not accept TrueType fonts or any non-postscript fonts.

Metal Arts is not responsible for incompatibility.

Warranty Information

Metal Arts warranties the products we produce for 10 years from the date order is shipped from our plant in Mandan, North Dakota. If our product should ever fail Metal Arts will replace or repair the product that has failed at our option.

The warranty covers only the Metal Arts product. Installation, faulty or otherwise is not covered by Metal Arts. Injury, loss or damage due to product failure, faulty installation or loss of usage is not covered by the Metal Arts warranty.

The user of Metal Arts products will be responsible for determining that the product is used for the intended purpose of the product, and assumes any liability with the usage of the product and the installation of the product.

Removal and reinstallation is not covered by the warranty. The warranty may or may not cover return freight to Metal Arts plant in Mandan, ND. Contact a service representative for details.

Terms of Sale

All sales require a 50% deposit and the balance to ship C.O.D. unless the customer has a line of credit with Metal Arts. Customers with established credit are expected to pay net 30 days or within the terms as agreed upon. Failure to pay within the terms as stated, could require the account status to be changed to C.O.D.

Contact customer service for a credit application to establish credit, allow 2-3 weeks for this process. Order will not be shipped until credit or payments have been arranged.

Order Cancellation

Cancellation of order is subject to a cancellation charge based on our labor and material invested at the time of cancellation. Merchandise may not be returned without Metal Arts written consent.

Placing an Order

When placing a plaque order with Metal Arts, there are some things you need to be aware of, such as plaque size (height, length & thickness), fonts, border, etc. Placing a letter or logo order with Metal Arts, there also are elements you need to be concerned with, such things as font selection, size, thickness, etc..

Below are listing of all the elements that need to be decided on before an order is placed. You can call a sales representative to help you through this process or you can fill out the order form that will be faxed from our sales department or log on to our web site for a pdf version of the order form. **Mininum order charge \$100.00 retail.**

Ordering information for...

Plaques:

1. Plaque size length, height & thickness (normal 1/2")
2. Material and font choice
3. Logo, seal or insignia
4. Border choice
5. Background texture
6. Background finish or color
7. Mounting method
8. Attach separate sheet with text and approximate layout
9. Approval drawing: fax or mail

The amount of text and the size of the characters have to be able to fit the allowed area on a plaque. We are restricted to 1/4" sans serif letters and 3/8" serif letters, as the smallest character heights. Common problems are using too many letters or too large of letters to fit a plaque size. Metal Arts will advise you on these problems when the situation arises, these are sometimes not noticed until the scale proof for your approval is processed. When this happens, the plaque price will be adjusted accordingly and you will be advised of any cost change before we proceed any further.

It is very important to be as accurate as possible with your initial information. Alterations in plaque design and text can cause delays and increase costs. Complete printed or typed text will aid in avoiding spelling errors.

Standard & Custom Letters / Logos:

1. Font selection or logo name & print required
2. Digital camera ready art is required (custom work only)
3. Letter/logo size, height of upper case letter or logo
4. Letter/logo thickness
5. Letter/logo face shape, flat, oval, prismatic or other
6. Letter/logo material
7. Letter/logo Finish
8. Mounting method
9. Letter text: show exactly as required
10. Template requirements (basic straight lines no charge) other template requirements; request a quote

Standard Letter Price

All letter prices include standard FMM-1 or FMW-2 and PMS-3 with tube spacers up to 1-1/2" long, plus E-6000 water proof adhesive. Templates are included provided they are basic straight lines and spacing. Any arched, extended or special template will be quoted. Check correctness of template before drilling; supplier not responsible for cost incurred through errors in template. See page 7 for special hardware not furnished as standard.

General Information

Table of Contents

Cast Metal Letters

4-12

101 Futura	4	210 Times Bold	9
102 Kabel	4	301 Deep Ribbon	10
104 20th Century	4	302 CD DP Modern Ribbon	10
105 CD Gothic	5	303 Light Ribbon	10
106 Helvetica Medium	5	401 Microgramma	11
107 Block	5	403 Clarendon CD	11
108 Grotesque	6	404 Optima	11
109 Univers 67	6	410 Optima Semi BD	12
110 Helvetica Regular	6	407 Helvetica Italic	12
111 Helvetica Bold	7	409 Souvenir	12
112 Avant Garde	7	Custom Cast Letters	13
203 Craw Clarendon	7	Caducei	13
204 Flat Face Roman	8	Materials	14
205 Prismatic Roman	8	Finishes	14
207 Palatino	8	Standard Mounting Methods	14
208 Friz Quadrata	9	Special Mounting Hardware	15
209 Times New Roman	9	Color Chart	15

Precision Cut Graphics

16-17

Samples	16	Pricing	17
---------------	----	---------------	----

Cast Metal Plaques

Plaques Ideas	18-21	Rosettes	23
Fonts	22	Mounting Methods	23
Finishes	22	Custom & Ornamental Designs	23
Textures	22	Border Styles	23

Mounting Accessories

24

Shipping

Metal Arts takes care in packaging and choosing the proper carrier when shipping product to our customers. Our shipping personnel carefully wrap, box or crate our products in a manner to avoid damage in shipping. In most cases the customer is responsible for the shipping cost, and if this is the case, this allows you the right to choose the shipping method. Metal Arts will ship most orders via UPS ground or common carrier for larger and heavier items.

Drawings For Approval

Scaled size shop drawing showing letters and/or plaque layout, including spacing, specifications and mounting method, will be furnished for approval at no extra charge when required. This applies only to orders over \$250.00 retail, on smaller orders add \$50.00 retail for approval drawings. If order is changed (such as size, style or text) a revised drawing for approval is required and there will be an additional retail charge of \$60.00 to \$100.00. Drawing can be faxed or mailed. If mailed please limit request to six copies max. When an approval drawing is required, no fabrication will start until after receipt of approved drawing.

Cast Metal Letters

101 FUTURA



1234567890

ABCDEFGHIJKLMNOPQRSTUVWXYZ

Height	2	3	4	5	6	8	10	12	14	15	16	18	20	24
Stroke	7/16	5/8	3/4	1 1/8	1 1/4	1 3/4	2	2	2 3/8	3 3/16	3 1/4	3 13/16	4 1/4	5 1/8
Depth	1/2	5/8	3/4	7/8	1	1 1/4	1 1/2	2	2	2 1/4	2 1/4	2 1/2	3	3
Avg. Width	1 5/8	2 7/16	3 3/4	4 1/8	4 7/8	6 1/2	8 1/2	10	11 1/2	12	13	14 3/4	16 1/2	18 5/8

Cost by Size and Finish (For complete description of finishes see page 14)

Size	2	3	4	5	6	8	10	12	14	15	16	18	20	24
Finish #10	\$18.00	\$18.00	\$20.00	\$24.00	\$29.00	\$39.00	\$49.00	\$62.00	\$74.00	\$90.00	\$101.00	\$123.00	\$160.00	\$202.00
Finish #20	\$20.00	\$20.00	\$23.00	\$27.00	\$32.00	\$43.00	\$54.00	\$69.00	\$82.00	\$100.00	\$112.00	\$137.00	\$177.00	\$224.00
Finish #30	\$23.00	\$23.00	\$26.00	\$31.00	\$37.00	\$49.00	\$64.00	\$81.00	\$97.00	\$117.00	\$132.00	\$160.00	\$208.00	\$264.00
Finish #40	\$27.00	\$27.00	\$31.00	\$37.00	\$44.00	\$59.00	\$74.00	\$95.00	\$113.00	\$137.00	\$154.00	\$187.00	\$244.00	\$306.00
Finish #50	\$36.00	\$36.00	\$43.00	\$54.00	\$74.00	\$100.00	\$131.00	\$169.00	\$229.00	\$288.00	\$324.00	\$349.00		
Finish #60	\$40.00	\$40.00	\$47.00	\$60.00	\$81.00	\$110.00	\$144.00	\$186.00	\$251.00	\$317.00	\$346.00	\$384.00		

102 KABEL



1234567890

ABCDEFGHIJKLMNOPQRSTUVWXYZ

Height	2	3	4	5	6	8	10	12	14	15	16	18	20	24
Stroke	1/4	1/2	3/4	3/4	7/8	1 1/4	1 9/16	1 3/4	2	2	2 1/8	2 1/4	2 5/8	3 1/2
Depth	1/4	3/8	3/8	3/8	1/2	5/8	11/16	3/4	7/8	7/8	1 1/8	1	1 1/8	2
Avg. Width	1 1/2	2 1/4	3	3 1/2	4	5	7	8	9	10	11	12	14 3/8	18

Cost by Size and Finish (For complete description of finishes see page 14)

Size	2	3	4	5	6	8	10	12	14	15	16	18	20	24
Finish #10	\$15.00	\$15.00	\$17.00	\$20.00	\$24.00	\$31.00	\$41.00	\$49.00	\$57.00	\$70.00	\$80.00	\$106.00	\$120.00	\$174.00
Finish #20	\$17.00	\$17.00	\$19.00	\$22.00	\$26.00	\$36.00	\$45.00	\$55.00	\$63.00	\$78.00	\$88.00	\$118.00	\$133.00	\$194.00
Finish #30	\$21.00	\$21.00	\$23.00	\$26.00	\$32.00	\$44.00	\$55.00	\$66.00	\$76.00	\$94.00	\$107.00	\$142.00	\$160.00	\$234.00
Finish #40	\$25.00	\$25.00	\$28.00	\$32.00	\$38.00	\$51.00	\$66.00	\$80.00	\$87.00	\$107.00	\$121.00	\$161.00	\$182.00	\$266.00
Finish #50	\$32.00	\$32.00	\$38.00	\$46.00	\$61.00	\$81.00	\$109.00	\$134.00	\$183.00	\$227.00	\$256.00	\$324.00		
Finish #60	\$35.00	\$35.00	\$42.00	\$50.00	\$67.00	\$89.00	\$120.00	\$147.00	\$201.00	\$250.00	\$282.00	\$356.00		

104 20th CENTURY



1234567890

ABCDEFGHIJKLMNOPQRSTUVWXYZ

Height	2	3	4	6	8	10	12	14	16	18	24
Stroke	3/8	1/2	3/4	1	1 1/4	1 1/2	1 3/4	2	2 1/8	2 1/4	3 1/2
Depth	3/8	3/8	1/2	3/4	1 1/4	1 1/2	1 3/4	2	2 1/8	2 1/4	2 1/2
Avg. Width	1 1/2	2 3/8	3	4	6	7	8 1/2	10	12	13	16

Cost by Size and Finish (For complete description of finishes see page 14)

Size	2	3	4	6	8	10	12	14	16	18	24
Finish #10	\$17.00	\$17.00	\$19.00	\$27.00	\$36.00	\$47.00	\$61.00	\$73.00	\$91.00	\$122.00	\$195.00
Finish #20	\$19.00	\$19.00	\$21.00	\$30.00	\$40.00	\$52.00	\$68.00	\$82.00	\$101.00	\$135.00	\$217.00
Finish #30	\$23.00	\$23.00	\$25.00	\$36.00	\$48.00	\$63.00	\$82.00	\$98.00	\$122.00	\$163.00	\$261.00
Finish #40	\$26.00	\$26.00	\$29.00	\$41.00	\$55.00	\$71.00	\$93.00	\$112.00	\$139.00	\$185.00	\$298.00
Finish #50	\$36.00	\$36.00	\$42.00	\$69.00	\$93.00	\$127.00	\$166.00	\$227.00			
Finish #60	\$40.00	\$40.00	\$46.00	\$76.00	\$102.00	\$140.00	\$182.00	\$249.00			

105 CD GOTHIC



1234567890
ABCDEFGHIJKLMNOPQRSTUVWXYZ

Height	2	3	4	5	6	8	9	10	12	14	16	18	24
Stroke	1/4	3/8	1/2	9/16	3/4	1	1	1 1/4	1 3/8	1 5/8	1 3/4	2	3
Depth	1/4	3/8	3/8	1/2	5/8	3/4	7/8	1	1 1/8	1 1/4	1 3/8	1 1/2	1 3/4
Avg. Width	1 3/8	2	2 3/4	3	4	5	6	6 3/4	8	9 1/2	10 1/2	12	16

Cost by Size and Finish (For complete description of finishes see page 14)

Size	2	3	4	5	6	8	9	10	12	14	16	18	24
Finish #10	\$15.00	\$15.00	\$17.00	\$20.00	\$23.00	\$29.00	\$35.00	\$41.00	\$52.00	\$58.00	\$82.00	\$117.00	\$189.00
Finish #20	\$16.00	\$16.00	\$19.00	\$22.00	\$25.00	\$33.00	\$39.00	\$46.00	\$58.00	\$65.00	\$91.00	\$130.00	\$211.00
Finish #30	\$20.00	\$20.00	\$23.00	\$27.00	\$31.00	\$40.00	\$48.00	\$56.00	\$71.00	\$75.00	\$105.00	\$150.00	\$244.00
Finish #40	\$24.00	\$24.00	\$28.00	\$32.00	\$37.00	\$48.00	\$57.00	\$67.00	\$85.00	\$89.00	\$125.00	\$179.00	\$290.00
Finish #50	\$31.00	\$31.00	\$38.00	\$46.00	\$59.00	\$74.00	\$90.00	\$111.00	\$148.00	\$181.00			
Finish #60	\$34.00	\$34.00	\$42.00	\$50.00	\$64.00	\$81.00	\$98.00	\$122.00	\$162.00	\$199.00			

106 HELVETICA MEDIUM



abcdefghijklmnopqrstuvwxyz 1234567890
ABCDEFGHIJKLMNOPQRSTUVWXYZ

Height	2	3	4	5	6	7	8	9	10	12	14	15	16	18	20	24
Stroke	7/16	5/8	13/16	1 1/8	1 1/4	1 7/16	1 11/16	1 7/8	2 3/16	2 1/2	2 7/8	3 1/4	3 7/16	3 3/4	4 3/16	5 1/16
Depth	3/8	1/2	5/8	3/4	3/4	1	1	1	1	1 1/4	1 1/2	1 1/2	1 1/2	1 1/2	1 1/2	2
Avg. Width	5/8	2 3/8	3 1/4	4	5	6	7 1/8	7 3/4	8 1/2	10	12	12 1/2	13 1/2	15	17 1/2	20

Cost by Size and Finish (For complete description of finishes see page 14)

Size	2	3	4	5	6	7	8	9	10	12	14	15	16	18	20	24
Finish #10	\$18.00	\$18.00	\$20.00	\$24.00	\$26.00	\$32.00	\$37.00	\$42.00	\$47.00	\$59.00	\$70.00	\$80.00	\$97.00	\$116.00	\$149.00	\$195.00
Finish #20	\$20.00	\$20.00	\$22.00	\$26.00	\$29.00	\$35.00	\$41.00	\$47.00	\$52.00	\$65.00	\$77.00	\$89.00	\$108.00	\$129.00	\$165.00	\$216.00
Finish #30	\$24.00	\$24.00	\$27.00	\$32.00	\$35.00	\$43.00	\$47.00	\$54.00	\$60.00	\$75.00	\$89.00	\$103.00	\$124.00	\$148.00	\$190.00	\$249.00
Finish #40	\$29.00	\$29.00	\$32.00	\$38.00	\$42.00	\$51.00	\$57.00	\$64.00	\$72.00	\$90.00	\$106.00	\$123.00	\$148.00	\$177.00	\$226.00	\$296.00
Finish #50	\$34.00	\$34.00	\$40.00	\$49.00	\$62.00	\$74.00	\$87.00	\$98.00	\$116.00	\$159.00	\$205.00	\$239.00	\$286.00	\$334.00	\$443.00	\$620.00
Finish #60	\$37.00	\$37.00	\$44.00	\$54.00	\$68.00	\$82.00	\$96.00	\$108.00	\$127.00	\$175.00	\$226.00	\$263.00	\$315.00	\$368.00	\$488.00	\$684.00

107 BLOCK



1234567890
ABCDEFGHIJKLMNOPQRSTUVWXYZ

Height	3	4	6	8	10	12	15	18
Stroke	5/8	7/8	1 1/8	1 1/4	1 3/4	2 1/4	2 3/4	3 1/4
Depth	1/2	5/8	3/4	1	1	1 1/4	1 3/8	1 1/2
Avg. Width	2 3/8	3 1/2	4	5 1/4	7	8	10	12

Cost by Size and Finish (For complete description of finishes see page 14)

Size	3	4	6	8	10	12	15	18
Finish #10	\$17.00	\$18.00	\$27.00	\$35.00	\$46.00	\$58.00	\$78.00	\$113.00
Finish #20	\$18.00	\$20.00	\$30.00	\$39.00	\$51.00	\$64.00	\$87.00	\$126.00
Finish #30	\$22.00	\$24.00	\$36.00	\$47.00	\$61.00	\$74.00	\$101.00	\$145.00
Finish #40	\$27.00	\$29.00	\$43.00	\$53.00	\$70.00	\$88.00	\$120.00	\$173.00
Finish #10	\$34.00	\$40.00	\$62.00	\$87.00	\$116.00	\$159.00	\$239.00	\$334.00
Finish #20	\$37.00	\$44.00	\$68.00	\$96.00	\$127.00	\$175.00	\$263.00	\$368.00

*Corresponding lower case letters 15% less than upper case. - Punctuation marks are 1/3 price of letter, dashes are 1/2 price of letter.

Cast Metal Letters

108 GROTESQUE



1234567890
ABCDEFGHIJKLMNOPQRSTUVWXYZ

Height	3	4	6	8	10	12	15	18
Stroke	3/8	1/2	3/4	1	1 1/4	1 1/2	1 7/8	2 5/16
Depth	1/4	3/8	1/2	5/8	7/8	1	1	1
Avg. Width	1 1/8	1 1/2	2 1/4	3	3 3/4	4 1/2	5 5/8	6 3/4

Cost by Size and Finish (For complete description of finishes see page 14)

Size	3	4	6	8	10	12	15	18
Finish #10	\$14.00	\$16.00	\$23.00	\$31.00	\$39.00	\$53.00	\$70.00	\$88.00
Finish #20	\$15.00	\$18.00	\$25.00	\$35.00	\$43.00	\$59.00	\$78.00	\$98.00
Finish #30	\$18.00	\$22.00	\$30.00	\$42.00	\$53.00	\$69.00	\$90.00	\$113.00
Finish #40	\$22.00	\$27.00	\$33.00	\$51.00	\$64.00	\$82.00	\$106.00	\$135.00
Finish #50	\$27.00	\$36.00	\$60.00	\$81.00	\$106.00	\$153.00	\$213.00	\$254.00
Finish #60	\$30.00	\$40.00	\$66.00	\$89.00	\$116.00	\$169.00	\$235.00	\$282.00

109 UNIVERS 67



abcdefghijklmnopqrstuvwxyz 1234567890
ABCDEFGHIJKLMNOPQRSTUVWXYZ

Height	3	4	5	6	8	9	10	12	15	18
Stroke	5/8	7/8	1 1/16	1 1/4	1 5/8	1 7/8	2	2 9/16	3 1/4	3 5/8
Depth	3/8	1/2	1/2	3/4	1	1	1	1	1 1/2	1 1/2
Avg. Width	2	2 3/4	3 3/8	4 1/8	5 1/2	6	6 7/8	8 1/4	10 5/16	12 3/8

Cost by Size and Finish (For complete description of finishes see page 14)

Size	3	4	5	6	8	9	10	12	15	18
Finish #10	\$17.00	\$18.00	\$23.00	\$27.00	\$36.00	\$41.00	\$46.00	\$56.00	\$81.00	\$111.00
Finish #20	\$18.00	\$21.00	\$25.00	\$30.00	\$40.00	\$46.00	\$51.00	\$63.00	\$90.00	\$123.00
Finish #30	\$22.00	\$25.00	\$31.00	\$37.00	\$47.00	\$53.00	\$59.00	\$72.00	\$104.00	\$142.00
Finish #40	\$27.00	\$30.00	\$36.00	\$42.00	\$55.00	\$63.00	\$70.00	\$86.00	\$123.00	\$169.00
Finish #50	\$35.00	\$41.00	\$56.00	\$70.00	\$94.00	\$106.00	\$124.00	\$160.00	\$233.00	\$319.00
Finish #60	\$40.00	\$45.00	\$61.00	\$77.00	\$103.00	\$117.00	\$137.00	\$176.00	\$258.00	\$354.00

110 HELVETICA REGULAR



abcdefghijklmnopqrstuvwxyz 1234567890
ABCDEFGHIJKLMNOPQRSTUVWXYZ

Height	2	3	4	5	6	8	9	10	12	15	18	24
Stroke	5/16	3/8	9/16	11/16	7/8	1 1/8	1 1/4	1 7/16	1 5/8	2	2 3/8	3 1/4
Depth	1/4	1/4	3/8	3/8	3/8	1/2	1/2	1/2	1/2	3/4	3/4	3/4
Avg. Width	1 5/8	2 3/8	3 3/16	3 7/8	4 13/16	6 1/2	7 1/4	8 1/8	9 1/2	11 7/8	14 1/4	19

Cost by Size and Finish (For complete description of finishes see page 14)

Size	2	3	4	5	6	8	9	10	12	15	18	24
Finish #10	\$16.00	\$16.00	\$18.00	\$21.00	\$24.00	\$34.00	\$37.00	\$44.00	\$56.00	\$76.00	\$107.00	\$182.00
Finish #20	\$18.00	\$18.00	\$20.00	\$23.00	\$27.00	\$38.00	\$43.00	\$49.00	\$62.00	\$84.00	\$119.00	\$200.00
Finish #30	\$22.00	\$22.00	\$24.00	\$28.00	\$32.00	\$46.00	\$52.00	\$57.00	\$71.00	\$97.00	\$138.00	\$232.00
Finish #40	\$26.00	\$26.00	\$29.00	\$34.00	\$39.00	\$55.00	\$63.00	\$68.00	\$85.00	\$116.00	\$164.00	\$276.00
Finish #50	\$32.00	\$32.00	\$38.00	\$48.00	\$59.00	\$82.00	\$95.00	\$109.00	\$150.00	\$211.00	\$297.00	\$565.00
Finish #60	\$37.00	\$37.00	\$42.00	\$53.00	\$64.00	\$90.00	\$105.00	\$120.00	\$166.00	\$231.00	\$326.00	\$621.00

111 HELVETICA BOLD



abcdefghijklmnopqrstuvwxyz 1234567890
ABCDEFGHIJKLMNOPQRSTUVWXYZ

Height	2	3	4	5	6	8	9	10	12	15	18
Stroke	5/8	15/16	1 3/16	1 1/2	1 13/16	2 1/2	2 3/4	3	3 5/8	4 5/8	5 5/8
Depth	1/4	1/4	3/8	3/8	3/8	1/2	1/2	1/2	1/2	3/4	3/4
Avg. Width	1 7/8	2 7/8	3 13/16	4 7/8	5 7/8	7 5/8	8 5/8	9 9/16	11 1/2	14 1/2	17 1/4

Cost by Size and Finish (For complete description of finishes see page 14)

Size	2	3	4	5	6	8	9	10	12	15	18
Finish #10	\$18.00	\$18.00	\$20.00	\$24.00	\$26.00	\$37.00	\$42.00	\$47.00	\$59.00	\$80.00	\$116.00
Finish #20	\$20.00	\$20.00	\$22.00	\$26.00	\$29.00	\$41.00	\$47.00	\$52.00	\$65.00	\$89.00	\$129.00
Finish #30	\$24.00	\$24.00	\$27.00	\$32.00	\$35.00	\$47.00	\$54.00	\$60.00	\$75.00	\$103.00	\$148.00
Finish #40	\$29.00	\$29.00	\$32.00	\$38.00	\$42.00	\$57.00	\$64.00	\$72.00	\$90.00	\$123.00	\$177.00
Finish #50	\$34.00	\$34.00	\$40.00	\$49.00	\$62.00	\$87.00	\$98.00	\$115.00	\$159.00	\$239.00	\$334.00
Finish #60	\$37.00	\$37.00	\$44.00	\$54.00	\$68.00	\$96.00	\$108.00	\$127.00	\$175.00	\$263.00	\$368.00

112 AVANT GARDE



abcdefghijklmnopqrstuvwxyz 1234567890
ABCDEFGHIJKLMNOPQRSTUVWXYZ

Height	3	4	5	6	8	9	10	12	15	18
Stroke	7/16	9/16	3/4	7/8	1 3/16	1 3/8	1 1/2	1 3/4	2 3/16	2 5/8
Depth	1/4	3/8	3/8	3/8	1/2	1/2	1/2	1/2	3/4	3/4
Avg. Width	2 1/16	2 3/4	3 13/16	4 1/8	5 9/16	6 1/4	6 15/16	8 5/16	10 3/8	12 7/16

Cost by Size and Finish (For complete description of finishes see page 14)

Size	3	4	5	6	8	9	10	12	15	18
Finish #10	\$16.00	\$18.00	\$21.00	\$24.00	\$34.00	\$39.00	\$44.00	\$56.00	\$76.00	\$107.00
Finish #20	\$18.00	\$20.00	\$23.00	\$27.00	\$38.00	\$43.00	\$49.00	\$62.00	\$84.00	\$119.00
Finish #30	\$22.00	\$24.00	\$28.00	\$32.00	\$46.00	\$52.00	\$60.00	\$71.00	\$97.00	\$138.00
Finish #40	\$26.00	\$29.00	\$34.00	\$39.00	\$54.00	\$62.00	\$71.00	\$85.00	\$116.00	\$164.00
Finish #50	\$32.00	\$38.00	\$48.00	\$59.00	\$82.00	\$95.00	\$109.00	\$150.00	\$211.00	\$297.00
Finish #60	\$35.00	\$42.00	\$53.00	\$64.00	\$90.00	\$105.00	\$120.00	\$166.00	\$231.00	\$325.00

203 CRAW CLARENDON



abcdefghijklmnopqrstuvwxyz 1234567890
ABCDEFGHIJKLMNOPQRSTUVWXYZ

Height	2	3	4	5	6	8	9	10	12	15	18	20
Stroke	1/2	3/4	1	1 1/4	1 7/16	1 7/8	2 1/8	2 3/8	3	3 1/2	4 7/16	4 3/4
Depth	1/4	3/8	3/8	3/8	1/2	3/4	3/4	3/4	1	1 1/4	1 1/4	1 1/2
Avg. Width	2 1/2	4	5	5 7/8	7 1/8	9 1/2	10	12 1/2	16	19	22	24

Cost by Size and Finish (For complete description of finishes see page 14)

Size	2	3	4	5	6	8	9	10	12	15	18	20
Finish #10	\$20.00	\$20.00	\$24.00	\$29.00	\$35.00	\$43.00	\$49.00	\$57.00	\$82.00	\$111.00	\$177.00	\$206.00
Finish #20	\$22.00	\$22.00	\$27.00	\$33.00	\$39.00	\$48.00	\$55.00	\$64.00	\$91.00	\$123.00	\$186.00	\$229.00
Finish #30	\$25.00	\$25.00	\$31.00	\$38.00	\$45.00	\$55.00	\$63.00	\$73.00	\$105.00	\$142.00	\$215.00	\$264.00
Finish #40	\$30.00	\$30.00	\$37.00	\$45.00	\$53.00	\$66.00	\$75.00	\$87.00	\$125.00	\$169.00	\$256.00	\$314.00
Finish #50	\$40.00	\$40.00	\$51.00	\$71.00	\$90.00	\$107.00	\$126.00	\$148.00	\$221.00	\$313.00	\$564.00	\$695.00
Finish #60	\$44.00	\$44.00	\$56.00	\$78.00	\$99.00	\$118.00	\$139.00	\$163.00	\$243.00	\$344.00	\$599.00	\$765.00

*Corresponding lower case letters 15% less than upper case. - Punctuation marks are 1/3 price of letter, dashes are 1/2 price of letter.

Cast Metal Letters

204 FLAT FACE ROMAN



1234567890

ABCDEFGHIJKLMNOPQRSTUVWXYZ

Height	2	3	4	5	6	8	10	12	15	16	18	20	24
Stroke	5/16	7/16	11/16	13/16	1 1/8	1 5/16	1 5/8	2	2 1/4	2 1/2	3	3 3/8	4
Depth	1/4	3/8	3/8	1/2	5/8	3/4	3/4	1	1 1/8	1 1/4	1 1/2	1 1/2	1 3/4
Avg. Width	1 7/8	2 1/2	3 3/4	4 1/8	5	6 5/8	8 1/4	10 1/4	12 1/2	13 1/4	15	16 1/2	20

Cost by Size and Finish (For complete description of finishes see page 14)

Size	2	3	4	5	6	8	10	12	15	16	18	20	24
Finish #10	\$18.00	\$18.00	\$21.00	\$25.00	\$27.00	\$37.00	\$45.00	\$58.00	\$82.00	\$93.00	\$114.00	\$152.00	\$199.00
Finish #20	\$20.00	\$20.00	\$23.00	\$28.00	\$31.00	\$41.00	\$50.00	\$65.00	\$91.00	\$103.00	\$127.00	\$168.00	\$222.00
Finish #30	\$24.00	\$24.00	\$28.00	\$33.00	\$37.00	\$47.00	\$58.00	\$75.00	\$106.00	\$119.00	\$146.00	\$195.00	\$257.00
Finish #40	\$28.00	\$28.00	\$33.00	\$40.00	\$44.00	\$56.00	\$69.00	\$90.00	\$128.00	\$144.00	\$174.00	\$231.00	\$304.00
Finish #50	\$37.00	\$37.00	\$46.00	\$58.00	\$68.00	\$91.00	\$122.00	\$167.00	\$285.00	\$337.00	\$354.00	\$449.00	\$625.00
Finish #60	\$41.00	\$41.00	\$50.00	\$64.00	\$75.00	\$100.00	\$135.00	\$184.00	\$313.00	\$372.00	\$389.00	\$492.00	\$688.00

205 PRISMATIC ROMAN



1234567890

ABCDEFGHIJKLMNOPQRSTUVWXYZ

Height	2	3	4	5	6	8	10	12	14	18
Stroke	5/16	9/16	3/4	3/4	7/8	1 1/8	1 3/8	1 1/2	2	2 5/8
Depth	3/8	1/2	5/8	5/8	5/8	3/4	3/4	3/4	3/4	1
Avg. Width	1 3/4	3	4	4 1/2	4 7/8	7 1/2	9 1/2	10 1/2	14	17

Cost by Size and Finish (For complete description of finishes see page 14)

Size	2	3	4	5	6	8	10	12	14	18
Finish #10	\$39.00	\$39.00	\$45.00	\$53.00	\$58.00	\$70.00	\$101.00	\$113.00	\$130.00	\$191.00
Finish #20	\$33.00	\$33.00	\$40.00	\$48.00	\$53.00	\$68.00	\$91.00	\$105.00	\$122.00	\$180.00
Finish #30	\$44.00	\$44.00	\$52.00	\$61.00	\$69.00	\$79.00	\$113.00	\$123.00	\$143.00	\$219.00
Finish #40	\$46.00	\$46.00	\$60.00	\$64.00	\$71.00	\$87.00	\$123.00	\$132.00	\$163.00	\$236.00
Finish #50	\$80.00	\$80.00	\$101.00	\$108.00	\$122.00	\$158.00	\$196.00	\$266.00	\$299.00	\$457.00
Finish #60	\$87.00	\$87.00	\$111.00	\$135.00	\$146.00	\$175.00	\$202.00	\$292.00	\$331.00	\$504.00

207 PALATINO



abcdefghijklmnopqrstuvwxyz 1234567890
ABCDEFGHIJKLMNOPQRSTUVWXYZ

Height	3	4	5	6	8	9	10	12	15	18
Stroke	5/16	1/2	5/8	3/4	1	1 1/8	1 1/4	1 3/8	1 3/4	2 1/4
Depth	3/8	3/8	3/8	3/8	1/2	1/2	1/2	1/2	3/4	3/4
Avg. Width	2 15/16	3 11/16	4 9/16	5 1/2	7 5/16	8 1/4	9 3/16	11	13 3/4	16 1/2

Cost by Size and Finish (For complete description of finishes see page 14)

Size	3	4	5	6	8	9	10	12	15	18
Finish #10	\$18.00	\$21.00	\$25.00	\$27.00	\$37.00	\$42.00	\$47.00	\$61.00	\$84.00	\$108.00
Finish #20	\$20.00	\$23.00	\$28.00	\$31.00	\$41.00	\$46.00	\$52.00	\$68.00	\$94.00	\$120.00
Finish #30	\$24.00	\$28.00	\$34.00	\$37.00	\$49.00	\$56.00	\$60.00	\$78.00	\$108.00	\$138.00
Finish #40	\$29.00	\$34.00	\$40.00	\$44.00	\$59.00	\$67.00	\$72.00	\$93.00	\$129.00	\$165.00
Finish #50	\$38.00	\$46.00	\$59.00	\$71.00	\$94.00	\$111.00	\$127.00	\$174.00	\$250.00	\$329.00
Finish #60	\$41.00	\$51.00	\$65.00	\$78.00	\$104.00	\$122.00	\$140.00	\$191.00	\$274.00	\$361.00

208 FRIZ QUADRATA



abcdefghijklmnopqrstuvwxyz 1234567890
ABCDEFGHIJKLMNOPQRSTUVWXYZ

Height	3	4	5	6	8	9	10	12	15	18
Stroke	1/2	5/8	13/16	1	1 5/16	1 7/16	1 9/16	2	2 5/16	3
Depth	3/8	3/8	3/8	3/8	1/2	1/2	1/2	1/2	3/4	3/4
Avg. Width	2 7/8	3 3/4	4 7/8	6	7 3/4	8 3/4	9 3/4	11 3/4	14 1/4	18

Cost by Size and Finish (For complete description of finishes see page 14)

Size	3	4	5	6	8	9	10	12	15	18
Finish #10	\$18.00	\$21.00	\$25.00	\$27.00	\$37.00	\$42.00	\$47.00	\$61.00	\$84.00	\$108.00
Finish #20	\$20.00	\$23.00	\$28.00	\$31.00	\$41.00	\$46.00	\$52.00	\$68.00	\$94.00	\$120.00
Finish #30	\$24.00	\$28.00	\$34.00	\$37.00	\$49.00	\$56.00	\$60.00	\$78.00	\$108.00	\$138.00
Finish #40	\$29.00	\$34.00	\$40.00	\$44.00	\$59.00	\$67.00	\$72.00	\$93.00	\$129.00	\$165.00
Finish #50	\$38.00	\$46.00	\$59.00	\$71.00	\$94.00	\$111.00	\$127.00	\$174.00	\$250.00	\$329.00
Finish #60	\$41.00	\$51.00	\$65.00	\$78.00	\$104.00	\$122.00	\$140.00	\$191.00	\$274.00	\$361.00

209 TIMES NEW ROMAN



abcdefghijklmnopqrstuvwxyz 1234567890
ABCDEFGHIJKLMNOPQRSTUVWXYZ

Height	2	3	4	5	6	7	8	9	10	12	15	16	18
Stroke	5/16	1/2	5/8	3/4	15/16	1 1/8	1 1/4	1 7/16	1 5/8	1 15/16	2 7/16	2 5/8	2 15/16
Depth	1/4	1/4	3/8	3/8	3/8	3/8	1/2	1/2	1/2	1/2	3/4	3/4	3/4
Avg. Width	1 15/16	2 7/8	3 11/16	4 5/8	5 5/8	6 1/2	7 1/2	8 3/8	9 5/16	11 1/8	13 7/8	15	17

Cost by Size and Finish

Size	2	3	4	5	6	7	8	9	10	12	15	16	18
Finish #10	\$18.00	\$18.00	\$21.00	\$25.00	\$27.00	\$32.00	\$37.00	\$42.00	\$47.00	\$61.00	\$84.00	\$96.00	\$108.00
Finish #20	\$20.00	\$20.00	\$23.00	\$28.00	\$31.00	\$36.00	\$41.00	\$46.00	\$52.00	\$68.00	\$94.00	\$107.00	\$120.00
Finish #30	\$24.00	\$24.00	\$28.00	\$34.00	\$37.00	\$43.00	\$49.00	\$56.00	\$63.00	\$78.00	\$108.00	\$123.00	\$138.00
Finish #40	\$29.00	\$29.00	\$34.00	\$40.00	\$44.00	\$51.00	\$59.00	\$67.00	\$72.00	\$93.00	\$129.00	\$147.00	\$165.00
Finish #50	\$38.00	\$38.00	\$46.00	\$59.00	\$71.00	\$83.00	\$94.00	\$111.00	\$127.00	\$174.00	\$250.00	\$289.00	\$329.00
Finish #60	\$41.00	\$41.00	\$51.00	\$65.00	\$78.00	\$91.00	\$104.00	\$122.00	\$140.00	\$191.00	\$274.00	\$317.00	\$361.00

210 TIMES BOLD



abcdefghijklmnopqrstuvwxyz 1234567890
ABCDEFGHIJKLMNOPQRSTUVWXYZ

Height	2	3	4	5	6	7	8	9	10	12	15	18
Stroke	7/16	11/16	15/16	1 3/16	1 3/8	1 9/16	1 13/16	2	2 1/4	2 3/4	3 3/8	4 1/16
Depth	1/4	1/4	3/8	3/8	3/8	3/8	1/2	1/2	1/2	1/2	3/4	3/4
Avg. Width	1 15/16	2 7/8	3 11/16	4 5/8	5 5/8	6 1/2	7 1/2	8 3/8	9 5/16	11 1/8	13 7/8	17

Cost by Size and Finish (For complete description of finishes see page 14)

Size	2	3	4	5	6	7	8	9	10	12	15	18
Finish #10	\$18.00	\$18.00	\$21.00	\$25.00	\$27.00	\$32.00	\$37.00	\$42.00	\$47.00	\$61.00	\$84.00	\$108.00
Finish #20	\$20.00	\$20.00	\$23.00	\$28.00	\$31.00	\$36.00	\$41.00	\$46.00	\$52.00	\$68.00	\$94.00	\$120.00
Finish #30	\$24.00	\$24.00	\$28.00	\$34.00	\$37.00	\$43.00	\$49.00	\$56.00	\$63.00	\$78.00	\$108.00	\$138.00
Finish #40	\$29.00	\$29.00	\$34.00	\$40.00	\$44.00	\$51.00	\$59.00	\$67.00	\$72.00	\$93.00	\$129.00	\$165.00
Finish #50	\$38.00	\$38.00	\$46.00	\$59.00	\$71.00	\$83.00	\$94.00	\$111.00	\$127.00	\$174.00	\$250.00	\$329.00
Finish #60	\$41.00	\$41.00	\$51.00	\$65.00	\$78.00	\$91.00	\$104.00	\$122.00	\$140.00	\$191.00	\$274.00	\$361.00

*Corresponding lower case letters 15% less than upper case. - Punctuation marks are 1/3 price of letter, dashes are 1/2 price of letter.

Cast Metal Letters

301 DEEP RIBBON



1234567890
ABCDEFGHIJKLMNOPQRSTUVWXYZ

Height	2	3	4	5	6	8	10	12	15	16	18
Stroke	3/16	5/16	3/8	7/16	7/16	1/2	5/8	3/4	7/8	7/8	7/8
Depth	3/8	1	1 1/8	1 3/8	1 1/2	1 7/8	2 1/8	2 1/2	3	3	3
Avg. Width	1 3/8	2 1/4	2 3/4	3 1/2	4	5 1/2	7	8	10	10 1/2	12

Cost by Size and Finish (For complete description of finishes see page 14)

Size	2	3	4	5	6	8	10	12	15	16	18
Finish #10	\$17.00	\$17.00	\$22.00	\$26.00	\$32.00	\$39.00	\$50.00	\$64.00	\$97.00	\$112.00	\$142.00
Finish #20	\$19.00	\$19.00	\$24.00	\$29.00	\$35.00	\$44.00	\$55.00	\$71.00	\$107.00	\$125.00	\$158.00
Finish #30	\$24.00	\$24.00	\$29.00	\$35.00	\$41.00	\$51.00	\$64.00	\$82.00	\$124.00	\$144.00	\$182.00
Finish #40	\$28.00	\$28.00	\$35.00	\$41.00	\$49.00	\$60.00	\$76.00	\$97.00	\$147.00	\$172.00	\$217.00
Finish #50	\$35.00	\$35.00	\$46.00	\$57.00	\$74.00	\$92.00	\$122.00	\$157.00			
Finish #60	\$39.00	\$39.00	\$50.00	\$63.00	\$82.00	\$102.00	\$134.00	\$172.00			

302 CD DP MODERN RIBBON



1234567890
ABCDEFGHIJKLMNOPQRSTUVWXYZ

Height	2	3	4	6	8	10	12	14	16	18
Stroke	3/16	1/4	1/4	3/8	1/2	5/8	3/4	7/8	1	1 1/8
Depth	3/4	3/4	3/4	1 1/8	1 1/2	2	2 1/2	2 5/8	2 3/4	3
Avg. Width	7/8	1	1 3/8	2	2 1/4	3 1/8	4	4 3/4	6	6 1/2

Cost by Size and Finish

Size	2	3	4	6	8	10	12	14	16	18
Finish #10	\$16.00	\$16.00	\$20.00	\$29.00	\$40.00	\$48.00	\$61.00	\$80.00	\$101.00	\$128.00
Finish #20	\$18.00	\$18.00	\$22.00	\$32.00	\$44.00	\$53.00	\$67.00	\$89.00	\$112.00	\$142.00
Finish #30	\$23.00	\$23.00	\$25.00	\$38.00	\$51.00	\$61.00	\$78.00	\$103.00	\$129.00	\$164.00
Finish #40	\$27.00	\$27.00	\$30.00	\$45.00	\$61.00	\$73.00	\$92.00	\$122.00	\$154.00	\$196.00
Finish #50	\$34.00	\$34.00	\$44.00	\$77.00	\$98.00	\$129.00	\$175.00			
Finish #60	\$37.00	\$37.00	\$48.00	\$85.00	\$108.00	\$142.00	\$193.00			

303 LIGHT RIBBON



1234567890
ABCDEFGHIJKLMNOPQRSTUVWXYZ

Height	2	3	4	5	6	8	10	12	14	16
Stroke	3/16	1/4	1/4	1/4	3/8	3/8	1/2	1/2	9/16	5/8
Depth	3/8	3/4	3/4	3/4	1	1	1 1/8	1 1/8	1 1/4	1 1/2
Avg. Width	1 3/4	2	2 3/4	3 1/2	4	5	7	8 1/2	10	12

Cost by Size and Finish (For complete description of finishes see page 14)

Size	2	3	4	5	6	8	10	12	14	16
Finish #10	\$14.00	\$14.00	\$17.00	\$20.00	\$23.00	\$29.00	\$37.00	\$49.00	\$66.00	\$88.00
Finish #20	\$16.00	\$16.00	\$19.00	\$22.00	\$25.00	\$32.00	\$41.00	\$54.00	\$73.00	\$96.00
Finish #30	\$20.00	\$20.00	\$23.00	\$27.00	\$31.00	\$39.00	\$50.00	\$62.00	\$84.00	\$111.00
Finish #40	\$24.00	\$24.00	\$28.00	\$33.00	\$38.00	\$48.00	\$61.00	\$74.00	\$100.00	\$132.00
Finish #50	\$31.00	\$31.00	\$38.00	\$47.00	\$59.00	\$71.00	\$100.00	\$137.00		
Finish #60	\$34.00	\$34.00	\$41.00	\$51.00	\$65.00	\$78.00	\$110.00	\$151.00		

401 MICROGRAMMA



abcdefghijklmnopqrstuvwxyz 1234567890
ABCDEFGHIJKLMNOPQRSTUVWXYZ

Height	2	3	4	6	8	10	12	15	18	24
Stroke	5/8	7/8	1 1/4	1 3/4	2 3/8	2 7/8	3 1/2	4	4 1/2	7 1/2
Depth	3/8	1/2	5/8	3/4	1	1 1/4	1 1/2	1 1/2	2	2
Avg. Width	3	3 3/4	5	7 1/2	10	12 1/2	14 3/4	19	22	30 1/4

Cost by Size and Finish (For complete description of finishes see page 14)

Size	2	3	4	6	8	10	12	15	18	24
Finish #10	\$19.00	\$19.00	\$24.00	\$34.00	\$46.00	\$64.00	\$77.00	\$137.00	\$184.00	\$306.00
Finish #20	\$21.00	\$21.00	\$26.00	\$38.00	\$51.00	\$71.00	\$85.00	\$152.00	\$204.00	\$341.00
Finish #30	\$24.00	\$24.00	\$30.00	\$44.00	\$59.00	\$82.00	\$99.00	\$175.00	\$237.00	\$394.00
Finish #40	\$29.00	\$29.00	\$35.00	\$52.00	\$70.00	\$98.00	\$118.00	\$209.00	\$281.00	\$469.00
Finish #50	\$40.00	\$40.00	\$50.00	\$88.00	\$118.00	\$174.00	\$246.00	\$389.00		
Finish #60	\$44.00	\$44.00	\$55.00	\$97.00	\$130.00	\$192.00	\$271.00	\$428.00		

403 CLARENDON CD



1234567890
ABCDEFGHIJKLMNOPQRSTUVWXYZ

Height	4	6	8	9	10	12	15	18
Stroke	3/4	1	1 1/4	1 1/2	1 3/4	2	2 1/2	3 1/4
Depth	1/2	5/8	3/4	3/4	1	1	1 1/4	1 1/2
Avg. Width	2 3/4	4	5 1/2	6	6 1/2	8	10	12

Cost by Size and Finish (For complete description of finishes see page 14)

Size	4	6	8	9	10	12	15	18
Finish #10	\$21.00	\$27.00	\$37.00	\$41.00	\$46.00	\$61.00	\$81.00	\$112.00
Finish #20	\$24.00	\$30.00	\$41.00	\$46.00	\$51.00	\$68.00	\$90.00	\$125.00
Finish #30	\$28.00	\$35.00	\$47.00	\$53.00	\$59.00	\$78.00	\$103.00	\$144.00
Finish #40	\$33.00	\$41.00	\$56.00	\$63.00	\$71.00	\$93.00	\$123.00	\$171.00
Finish #50	\$45.00	\$70.00	\$95.00	\$107.00	\$124.00	\$179.00	\$260.00	\$359.00
Finish #60	\$49.00	\$76.00	\$104.00	\$117.00	\$137.00	\$197.00	\$288.00	\$400.00

404 OPTIMA



abcdefghijklmnopqrstuvwxyz 1234567890
ABCDEFGHIJKLMNOPQRSTUVWXYZ

Height	3	4	5	6	8	9	10	12	14	15	16	18	20
Stroke	7/16	1/2	11/16	3/4	1	1 1/8	1 1/4	1 1/2	1 3/4	1 7/8	2	2 5/8	2 7/8
Depth	1/4	3/8	3/8	3/8	1/2	1/2	1/2	1/2	3/4	3/4	3/4	3/4	1
Avg. Width	2 9/16	3 1/2	3 5/8	5 1/4	7	7 7/8	8 3/4	10 1/2	12 1/4	13	14	14 5/8	15 1/4

Cost by Size and Finish (For complete description of finishes see page 14)

Size	3	4	5	6	8	9	10	12	14	15	16	18	20
Finish #10	\$14.00	\$16.00	\$20.00	\$26.00	\$33.00	\$41.00	\$47.00	\$51.00	\$62.00	\$66.00	\$70.00	\$103.00	\$115.00
Finish #20	\$16.00	\$18.00	\$24.00	\$29.00	\$36.00	\$44.00	\$52.00	\$57.00	\$69.00	\$73.00	\$78.00	\$112.00	\$129.00
Finish #30	\$19.00	\$22.00	\$29.00	\$35.00	\$44.00	\$53.00	\$60.00	\$66.00	\$80.00	\$85.00	\$90.00	\$136.00	\$151.00
Finish #40	\$23.00	\$26.00	\$33.00	\$42.00	\$52.00	\$64.00	\$71.00	\$78.00	\$95.00	\$101.00	\$107.00	\$162.00	\$180.00
Finish #50	\$36.00	\$42.00	\$55.00	\$68.00	\$85.00	\$98.00	\$112.00	\$145.00	\$191.00	\$225.00	\$269.00	\$313.00	\$396.00
Finish #60	\$38.00	\$47.00	\$60.00	\$74.00	\$93.00	\$108.00	\$123.00	\$160.00	\$211.00	\$248.00	\$296.00	\$346.00	\$442.00

*Corresponding lower case letters 15% less than upper case. - Punctuation marks are 1/3 price of letter, dashes are 1/2 price of letter.

Cast Metal Letters

410 OPTIMA SEMI BD



abcdefghijklmnopqrstuvwxyz 1234567890
ABCDEFGHIJKLMNOPQRSTUVWXYZ

Height	3	4	5	6	8	9	10	12	14	15	16	18
Stroke	3/4	1 1/16	1 5/16	1 5/8	2 1/8	2 3/8	2 5/8	3 3/16	3 11/16	4	4 5/16	4 13/16
Depth	1/4	3/8	3/8	3/8	1/2	1/2	1/2	1/2	3/4	3/4	3/4	3/4
Avg. Width	2 5/8	3 3/8	4 3/8	5 3/8	7 1/8	8	8 7/8	10 5/8	12 3/8	13 3/8	14 1/4	16 1/8

Cost by Size and Finish (For complete description of finishes see page 14)

Size	3	4	5	6	8	9	10	12	14	15	16	18
Finish #10	\$18.00	\$21.00	\$25.00	\$27.00	\$37.00	\$42.00	\$47.00	\$61.00	\$72.00	\$84.00	\$96.00	\$108.00
Finish #20	\$20.00	\$23.00	\$28.00	\$31.00	\$41.00	\$46.00	\$52.00	\$68.00	\$80.00	\$94.00	\$107.00	\$120.00
Finish #30	\$23.00	\$27.00	\$32.00	\$35.00	\$47.00	\$54.00	\$60.00	\$78.00	\$92.00	\$108.00	\$119.00	\$138.00
Finish #40	\$28.00	\$32.00	\$39.00	\$42.00	\$56.00	\$64.00	\$72.00	\$93.00	\$109.00	\$129.00	\$142.00	\$165.00
Finish #50	\$38.00	\$46.00	\$59.00	\$71.00	\$94.00	\$111.00	\$127.00	\$174.00	\$209.00	\$250.00	\$289.00	\$329.00
Finish #60	\$41.00	\$51.00	\$65.00	\$78.00	\$104.00	\$122.00	\$140.00	\$191.00	\$229.00	\$274.00	\$318.00	\$361.00

407 HELVETICA ITALIC



abcdefghijklmnopqrstuvwxyz 1234567890
ABCDEFGHIJKLMNOPQRSTUVWXYZ

Height	2	3	4	5	6	8	9	10	12	15	18
Stroke	7/16	5/8	13/16	1	1 3/16	1 5/8	1 13/16	2	2 3/8	3	3 1/2
Depth	1/4	3/8	5/8	5/8	3/4	1	1	1	1 1/4	1 1/2	1 1/2
Avg. Width	1 7/8	2 15/16	3 3/8	4 3/16	5	7	7 7/8	8 3/4	10 1/2	13 1/8	15 3/4

Cost by Size and Finish (For complete description of finishes see page 14)

Size	2	3	4	5	6	8	9	10	12	15	18
Finish #10	\$19.00	\$19.00	\$21.00	\$24.00	\$28.00	\$40.00	\$44.00	\$49.00	\$62.00	\$84.00	\$119.00
Finish #20	\$21.00	\$21.00	\$23.00	\$30.00	\$31.00	\$42.00	\$48.00	\$55.00	\$68.00	\$95.00	\$132.00
Finish #30	\$24.00	\$24.00	\$27.00	\$31.00	\$36.00	\$49.00	\$56.00	\$63.00	\$79.00	\$109.00	\$153.00
Finish #40	\$28.00	\$28.00	\$32.00	\$37.00	\$42.00	\$58.00	\$67.00	\$75.00	\$94.00	\$130.00	\$182.00
Finish #50	\$36.00	\$36.00	\$40.00	\$53.00	\$66.00	\$89.00	\$105.00	\$122.00	\$152.00	\$274.00	\$379.00
Finish #60	\$40.00	\$40.00	\$43.00	\$58.00	\$73.00	\$98.00	\$116.00	\$134.00	\$167.00	\$302.00	\$421.00

409 SOUVENIR



abcdefghijklmnopqrstuvwxyz 1234567890
ABCDEFGHIJKLMNOPQRSTUVWXYZ

Height	3	4	5	6	8	9	10	12	15	18
Stroke	3/4	1	1 1/4	1 1/2	2	2 1/4	2 1/2	3	3 7/8	4 11/16
Depth	1/4	3/8	3/8	3/8	1/2	1/2	1/2	1/2	3/4	3/4
Avg. Width	3 1/4	4 5/16	5 3/8	6 1/2	8 5/8	9 3/4	10 13/16	13	16 1/4	19 3/8

Cost by Size and Finish (For complete description of finishes see page 14)

Size	3	4	5	6	8	9	10	12	15	18
Finish #10	\$18.00	\$21.00	\$25.00	\$27.00	\$37.00	\$42.00	\$47.00	\$61.00	\$84.00	\$108.00
Finish #20	\$20.00	\$23.00	\$28.00	\$31.00	\$41.00	\$46.00	\$52.00	\$68.00	\$94.00	\$120.00
Finish #30	\$23.00	\$27.00	\$32.00	\$35.00	\$47.00	\$54.00	\$60.00	\$79.00	\$108.00	\$138.00
Finish #40	\$28.00	\$32.00	\$39.00	\$42.00	\$56.00	\$64.00	\$72.00	\$93.00	\$129.00	\$165.00
Finish #50	\$38.00	\$46.00	\$59.00	\$71.00	\$94.00	\$111.00	\$127.00	\$174.00	\$250.00	\$329.00
Finish #60	\$41.00	\$51.00	\$65.00	\$78.00	\$104.00	\$122.00	\$140.00	\$191.00	\$274.00	\$360.00

*Corresponding lower case letters 15% less than upper case. - Punctuation marks are 1/3 price of letter, dashes are 1/2 price of letter.

Custom Cast Letters

Estimating Custom Letter Styles

■ For custom letter styles an estimated cost can be achieved by following these instructions and the custom mold chart shown below. Determine the letter height and thickness of each character required, always base size on the upper case version of the letter. Once this is determined refer to the chart for the mold charge, each character requires a mold, molds can be used over for repeating characters, (example: The word Mississippi has four "S" This will only need one mold for the four "S").

Example: Estimate the word "MISSISSIPPI" at 3/4" thick & 15" tall with a baked enamel finish and a font similar to Times Bold, concealed flush stud mount.

MISSISSIPPI

The word Mississippi has four "I" & "S". Two "P" and one "M". This requires only 4 patterns to complete the word. The cost is calculated to the right.

4 – Patterns = 860.00 retail
11 – Letters = 1034.00 retail
Total = 1894.00 retail

■ Locate a similar letter style from the Metal Arts standard selection, figure your price for the standard similar letter selection and add the mold charges to that amount. The same scenario can be followed for custom logos and graphics.

■ For a firm quote fax your information to Metal Arts, quote requests are normally returned the same day. Fax 1-800-522-7091.

Custom Mold Charge Chart – RETAIL PRICES

	1.5 - 4"	5" - 7"	8" - 10"	12" - 15"	16" - 20"	21" - 26"	28" - 32"
1/4"	\$48.00	\$72.00	\$91.00	\$122.00	\$154.00	\$175.00	\$198.00
3/8"	\$48.00	\$72.00	\$90.00	\$122.00	\$154.00	\$175.00	\$198.00
1/2"	\$66.00	\$85.00	\$104.00	\$138.00	\$177.00	\$195.00	\$223.00
5/8"	\$72.00	\$162.00	\$182.00	\$215.00	\$250.00	\$274.00	\$303.00
3/4"	\$72.00	\$162.00	\$182.00	\$215.00	\$250.00	\$274.00	\$303.00
1"	\$78.00	\$181.00	\$202.00	\$238.00	\$277.00	\$304.00	\$342.00
1-1/4"	\$200.00	\$221.00	\$144.00	\$300.00	\$330.00	\$373.00	\$431.00
1-1/2"	\$212.00	\$234.00	\$274.00	\$318.00	\$352.00	\$400.00	\$440.00
1-3/4"	\$224.00	\$247.00	\$287.00	\$331.00	\$364.00	\$415.00	\$469.00
2"	\$261.00	\$286.00	\$330.00	\$379.00	\$418.00	\$481.00	\$544.00
2-1/2"	\$274.00	\$298.00	\$344.00	\$394.00	\$434.00	\$499.00	\$548.00
3"	\$286.00	\$313.00	\$362.00	\$417.00	\$461.00	\$539.00	\$609.00

Price is per mold, molds can be reused. All molds are the property of Metal Arts and are retained for 1 year. Prismatic, round and oval face must be factory quoted

Caducei

Cast Aluminum



	Baked Enamel	Satin Highlighted
18"	\$201.00	\$237.00
24"	\$313.00	\$376.00
30"	\$343.00	\$437.00
48"	\$649.00	\$793.00
60"	\$791.00	\$1,003.00



Satin Highlighted Or Baked Enamel

18"	\$178.00
36"	\$457.00
48"	\$638.00



Veterinary Caducei Satin Highlighted or Baked Enamel

12"	\$132.00
18"	\$228.00
24"	\$343.00
36"	\$581.00



18"x18" Cast Aluminum

Satin Brite Highlighted	\$389.00
Bronze Duranodic	\$563.00
Cast Bronze Oxidized & Highlighted	\$630.00

*For Cast Bronze/Brass Caducei - Call for Quote.

Cast Metal Letters Materials

Materials

Metal Arts casts from the very best alloys: Prime Aluminum #514, Bronze #927 & Yellow Brass #406.



Finishes



#10 Satin Brite Aluminum*

Faces are belt polished to a fine satin finish. Sides are sandblasted and finished with two coats of high grade clear lacquer coating.



#20 Acrylic Baked Enamel

Two heavy coats of high grade acrylic urethane enamel. Baked at 200 degrees F. Custom colors add \$100.00 per color.



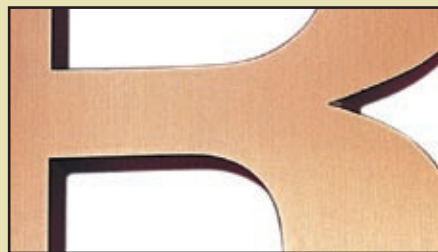
#30 Satin Alumilite*

Faces and sides are belt polished to a fine satin finish and completed with a clear anodized finish.



#40 Colored Anodic Finishes

Same as #30 Satin Alumilite except finish to be Kalcrol, Duranodic or Permanodic in light, medium or dark bronze, gold and black. (Note: Although anodic finishes are very durable, a variation in color may exist.)



#50 Satin Bronze or Yellow Brass*

Faces are belt polished to a fine satin finish. Sides are sandblasted and finished with acrylic Polyurethane clear coating.



#60 Oxidize Bronze

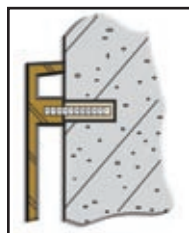
Letters are the same as #50 Satin Bronze except they are chemically oxidized to a dark statuary color, hand rubbed and protected with acrylic Polyurethane clear coating.

Minimum anodized charge \$200.00

Add 30% for Mirror Polishing of bronze, brass or aluminum.

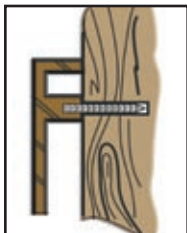
*Add 20% to #50 price for cast yellow brass.

Standard Mounting Methods



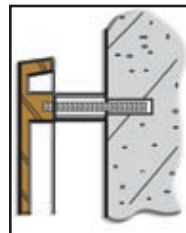
FMM-1*

Flush to masonry. Threaded stud of aluminum set with non-staining cement.



FMW-2*

Flush to wood threaded stud of aluminum with pointed end forced into under-sized holes with a small amount of non-staining cement on threads.



PMS-3*

Aluminum tube spacers 1/4" to 1 1/2" projected mounting and aluminum studs up to 4".

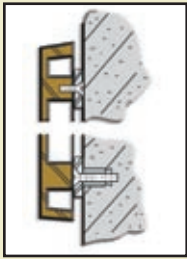
These types of mounting are included in the price of the letters.

* Note: Bronze letters use stainless steel studs.

Cast Metal Letters Materials

Special Mounting Hardware

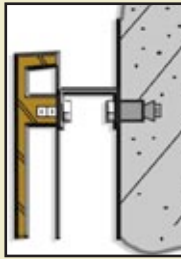
Prices reflect retail cost



BMB-6 Mounting Method

This is a channel or bar system that string each word together with bars on the back of letters.

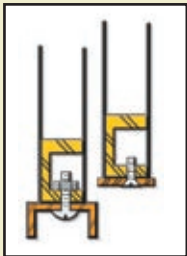
1. 2" to 4" \$17.00 per letter
2. 5" to 8" \$22.00 per letter
3. 10" to 16" \$28.00 per letter
4. 18" to 24" \$38.00 per letter
(add 50% for bronze or brass)



PMB-4 Mounting Method

This is a U-Bracket that fastens the letter to the wall using an extension bracket at each stud location.

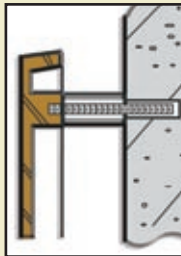
1. PMB 4-1.1/2" \$9.00 per letter
2. PMB 4-2" \$10.00 per letter



BM-7 Mounting Method

This is a channel or bar system that string each word together with bars on the bottom of letters.

1. 2" to 6" \$11.00 per letter
2. 8" to 12" \$15.00 per letter
3. 14" to 16" \$23.00 per letter
4. 18" to 24" \$28.00 per letter
(add 50% for brass or bronze)



PMS-3

Aluminum tube spacers for 1-3/4" to 3" projected mounting 75 cents per letter. Stainless steel studs with or without spacers for 1/4" to 1-1/2" projected mounting \$4.00 per letter. For spacers 1-3/4" to 3" \$6.00 per letter.

Prices include bar/channel assembly (bar and channel size at Metal Arts discretion), special sizes bar/channel require price quote.

Letter styles #102 Kabel, #205 Prismatic are not recommended for base mounting. Bar and channel mounted letters are pre-drilled and fitted, but may be shipped unassembled. To be reassembled by you to avoid excessive crating and shipping charges. Wall mounting hardware not included. Bars, channels & angles remain **mill finish** unless otherwise requested.

Color Chart

Black	Charcoal Gray	Dark Gray	Medium Gray	Gray	Deep Brown	Silver
Medium Brown	Light Brown	Burgundy	Toludine Red	Fire Red	Orange	Maroon
Chrome Yellow	Lemon Yellow	Medium Blue	Peacock Blue	Brite Blue	Majestic Blue	Dark Blue
Teal	Dark Green	Medium Green	Light Green	Tan	Ivory	
Light Bronze	Medium Bronze	Dark Bronze	Gold	Brushed Brass	White	

Metal Arts guarantees the acrylic urethane enamel is applied exactly to paint manufacturer's specifications. The manufacturer unconditionally guarantees paint against deterioration for ten years after installation. Custom Colors—Metal Arts uses the most accurate state of the art coloring system available to the sign industry. PMS (Pantone) printing ink colors should be used as a guide only, as they cannot be matched exactly in opaque coatings. Colors shown here are printed facsimile. Actual enamel finishes will vary somewhat from printed colors. Acrylic urethane enamel color chips for accurate color match are available upon request. Acrylic urethane is extremely durable, chemical and stain resistant with a maintenance free finish.

Precision Cut Graphics

Our computerized routers or water jet can cut aluminum, brass, bronze and stainless steel materials in various thicknesses. Metal Arts routers have the ability to cut any computerized graphics or letter styles from 2" on up. Our selection of fonts are available for plate cut letters. Custom letters and logos are available from customer supplied computer ready artwork.

How to Order

When preparing to order precision plate cut letters or graphics, the chart to the right can be used for pricing letters. Logos & Insignias it is recommended contacting Metal Arts for a quotation. For letters choose your font, mounting method, letter size, material, finish and thickness from the chart at the right to establish pricing. Letter sizes are based on the longest horizontal or vertical dimension. To determine the material, finish and mounting see the descriptive legend for each within this booklet. See special notations on page 17 for any applicable cost items.



Precision Cut Graphics

#10 Satin Brite Finish

Height and up to 75% width

Size	3"	4"	5"	6"	8"	9"	10"	12"	14"	15"	16"	18"	20"	24"
1/8" thick	\$20.00	\$22.00	\$25.00	\$28.00	\$34.00	\$38.00	\$41.00	\$51.00	\$71.00	\$80.00	\$89.00	\$103.00	\$135.00	\$173.00
1/4" thick	\$25.00	\$28.00	\$32.00	\$35.00	\$42.00	\$47.00	\$51.00	\$64.00	\$89.00	\$100.00	\$111.00	\$129.00	\$169.00	\$216.00
3/8" thick	\$32.00	\$36.00	\$41.00	\$46.00	\$55.00	\$61.00	\$66.00	\$83.00	\$116.00	\$130.00	\$144.00	\$168.00	\$219.00	\$280.00
1/2" thick	\$37.00	\$41.00	\$47.00	\$52.00	\$63.00	\$70.00	\$76.00	\$95.00	\$133.00	\$150.00	\$166.00	\$193.00	\$252.00	\$322.00

#20 Baked Enamel

Height and up to 75% width

Size	3"	4"	5"	6"	8"	9"	10"	12"	14"	15"	16"	18"	20"	24"
1/8" thick	\$22.00	\$25.00	\$28.00	\$31.00	\$38.00	\$42.00	\$46.00	\$57.00	\$80.00	\$90.00	\$100.00	\$116.00	\$151.00	\$193.00
1/4" thick	\$28.00	\$31.00	\$36.00	\$40.00	\$47.00	\$53.00	\$57.00	\$71.00	\$100.00	\$112.00	\$124.00	\$145.00	\$189.00	\$241.00
3/8" thick	\$36.00	\$39.00	\$46.00	\$51.00	\$61.00	\$69.00	\$74.00	\$93.00	\$130.00	\$146.00	\$162.00	\$188.00	\$245.00	\$314.00
1/2" thick	\$44.00	\$46.00	\$53.00	\$61.00	\$70.00	\$79.00	\$85.00	\$107.00	\$149.00	\$167.00	\$186.00	\$216.00	\$282.00	\$361.00

#30 Satin Alumilite

Height and up to 75% width

Size	3"	4"	5"	6"	8"	9"	10"	12"	14"	15"	16"	18"	20"	24"
1/8" thick	\$25.00	\$28.00	\$32.00	\$35.00	\$42.00	\$47.00	\$51.00	\$64.00	\$89.00	\$100.00	\$111.00	\$129.00	\$168.00	\$216.00
1/4" thick	\$31.00	\$35.00	\$40.00	\$44.00	\$53.00	\$59.00	\$64.00	\$80.00	\$112.00	\$125.00	\$139.00	\$162.00	\$211.00	\$269.00
3/8" thick	\$40.00	\$45.00	\$52.00	\$57.00	\$68.00	\$76.00	\$83.00	\$104.00	\$145.00	\$163.00	\$180.00	\$210.00	\$274.00	\$350.00
1/2" thick	\$46.00	\$52.00	\$59.00	\$65.00	\$79.00	\$88.00	\$95.00	\$119.00	\$167.00	\$187.00	\$208.00	\$242.00	\$315.00	\$403.00

#50 Satin Brass

Height and up to 75% width

Size	3"	4"	5"	6"	8"	9"	10"	12"	14"	15"	16"	18"	20"	24"
1/8" thick	\$30.00	\$35.00	\$42.00	\$48.00	\$66.00	\$81.00	\$100.00	\$125.00	\$174.00	\$196.00	\$217.00	\$253.00	\$327.00	\$421.00
1/4" thick	\$40.00	\$48.00	\$62.00	\$69.00	\$98.00	\$116.00	\$125.00	\$156.00	\$218.00	\$271.00	\$271.00	\$316.00	\$411.00	\$527.00

- Lower case 15% less than upper case
- Studs and templates are included
- Letters wider than tall (price using width)
- Punctuation is 1/3 letter cost
- Add 10% for custom work

- Add 30% to #10 or #50 finish for mirror polish (not available in 1/8" thick)
- Add 25% to Alumilite for color Anodize/Duranodic
- Add 30% for connecting scripts

- Add 50% to 1/4" brass for 3/8" brass
- Add 100% to 1/4" brass for 1/2" brass
- Copper and Bronze add 35% to brass
- Aluminum 5/8" plate add 25% to 1/2"
- 3/4" Aluminum plate add 50% to 1/2"

Stainless Steel

Height and up to 75% width

Size	1 1/2"	2"	3"	4"	5"	6"	8"	9"	10"	12"	14"	15"	16"	18"	20"	24"
1/8" thick	\$24.00	\$24.00	\$29.00	\$37.00	\$47.00	\$58.00	\$82.00	\$96.00	\$112.00	\$141.00	\$175.00	\$195.00	\$217.00	\$269.00	\$335.00	\$477.00
1/4" thick	\$37.00	\$37.00	\$47.00	\$58.00	\$61.00	\$88.00	\$124.00	\$145.00	\$167.00	\$214.00	\$275.00	\$309.00	\$344.00	\$421.00	\$506.00	\$710.00
3/8" thick	\$48.00	\$48.00	\$60.00	\$76.00	\$96.00	\$117.00	\$172.00	\$203.00	\$234.00	\$296.00	\$378.00	\$421.00	\$471.00	\$578.00	\$695.00	\$947.00
1/2" thick	\$74.00	\$74.00	\$94.00	\$117.00	\$123.00	\$176.00	\$248.00	\$290.00	\$333.00	\$429.00	\$550.00	\$622.00	\$688.00	\$842.00	\$1,012.00	\$1,421.00

- Price is for vertical satin brush finish, sandblasted returns - no clear coat.
- Add 10% for custom work
- Add 30% for connecting scripts

- Add 10% for satin returns, sandblasted is standard
 - Add 30% for mirror buffed face, satin returns
- *Price is based on longest dimension, height or length

Plaques

Metal Arts skilled staff of artists and craftsmen can transform your ideas into beautiful and functional metal plaques. Our plaques are cast from prime aluminum, bronze or yellow brass using the latest foundry technology and equipment. We offer a wide range of sizes, shapes and letter styles with the ability to do bas-relief sculptures, seals and logos. With Metal Arts photo-polymer process, many special effects and designs can now be achieved with black and white camera-ready artwork. For details on submitting your artwork on computer disk see page 2. After casting, our plaques are hand chased, finely polished and chemically protected to produce a high quality product.



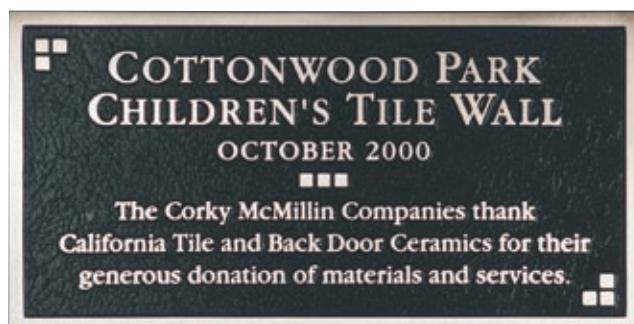
LAW OFFICES

Bronze Plaque - 24" x 15"
Times Roman raised lettering, satin finish, dark oxidized pebble textured background, single line border and a concealed mounting.



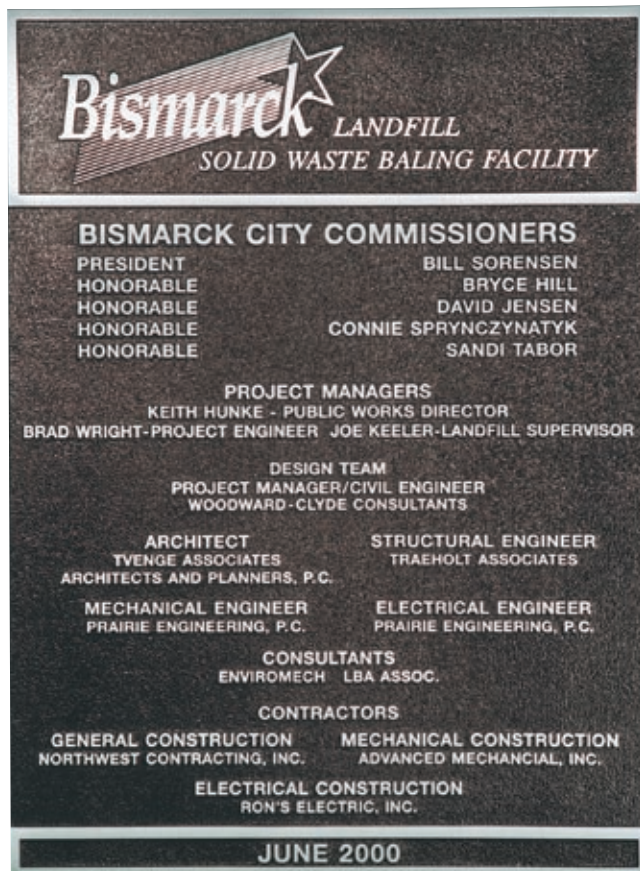
COACH

Yellow Brass Plaque - 24" x 7"
Custom logo, satin polished surface, pebble textured background, entire surface antique finished and a concealed mounting.



COTTONWOOD PARK

Bronze Plaque - 12" x 6"
Customer supplied artwork, raised lettering, satin finish, dark oxidized leatherette textured background, single line border and a concealed mounting.



BISMARCK LANDFILL SOLID WASTE BALING FACILITY

Aluminum Plaque - 22" x 30"
Helvetica Medium raised lettering, satin finish, dark gray pebble textured background, single line border and a concealed mounting.

DUCKS UNLIMITED DONOR PLAQUE

Bronze Plaque
22" x 40"
Times Bold raised lettering and graphics, satin finish, "DU" brown copper pebble textured background, single line border and a concealed mounting, with matching cast bronze donor plates.



HIGHLAND ACRES SCHOOL

*Recognizes the following groups for their
contributions for the Highland Acres
Playground Improvement Project*

*Students, Parents, Principal Barb Livermont and
the Staff of Highland Acres School with the
leadership of Jean King and Lydia Fewless*

*Northern Improvement
Kadmas, Lee and Jackson
Dakota Ready Mix
Bismarck Parks and Recreation
Bismarck Public Schools
1994 - 1997*

HIGHLAND ACRES SCHOOL

Bronze Plaque - 10" x 12"

Customer supplied artwork, raised lettering, satin finish, dark oxidized leatherette textured background, single line border and a concealed mounting.

HUDSON'S GIFT TO DETROIT

Bronze Plaque - 7.75" x 9"

Customer supplied artwork, raised lettering, satin finish. Custom tri-level design, dark oxidized pebble textured background, single line border and a concealed mounting.



ORIGINAL SCHOOL BUILDING

In 1893, the Thirty Second Street School was constructed between Avenues B and C as pictured on this plaque. In 1922, the Mothers and Teachers Club of the Thirty Second Street School formally requested that the Board of Education change the name of the school to Benjamin Franklin. The request was granted on July 1st of 1922.

In 1975, the building was replaced with the present Franklin School, constructed on this site, 3130 Avenue C. Voter approval of a bond issue on February 13th of 1996 provided for the addition of the east classroom wing and total renovation of the interior of the school. The project was completed in 1996.

When the 1975 school was constructed on Avenue C, bricks were taken from the original school of 1893 and built into a planter at the main entrance of the new building. In 1997, the same bricks were carefully removed from that planter and now adorn this wall.

ORIGINAL SCHOOL BUILDING

Bronze Plaque - 18" x 18"

Helvetica Bold raised lettering, satin finish, dark oxidized leatherette textured background, straight edge border and a concealed mounting. Special raised border frame with an actual photograph behind glass.

CITY OF VANDALIA

Bronze Plaque - 17" Diameter

Raised surface / custom graphics, satin bronze finish, dark oxidized recessed copy, leatherette textured background and a concealed mounting.

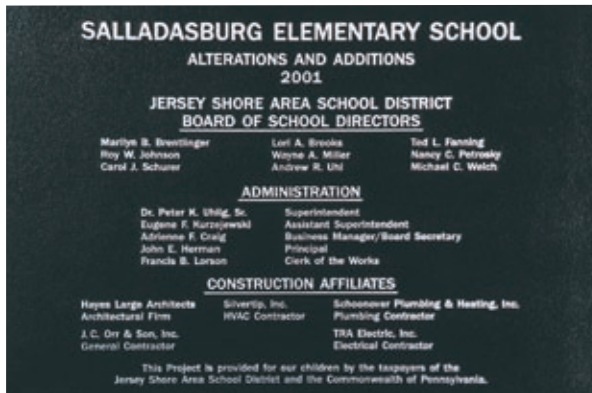


Plaques

MAJOR COOPERATORS

Bronze Plaque - 24" x 18"

Helvetica raised lettering, satin finish, dark oxidized leatherette textured background, single line border and a concealed mounting.



SALLADASBURG ELEMENTARY SCHOOL

Aluminum Plaque - 30" x 20"

Helvetica raised lettering, satin finish, black pebble textured background, straight edge border and a concealed mounting.

QUARRY FARM

Bronze Plaque - 35" x 17"

Customer supplied artwork with raised lettering, satin finish, Verdi Gris Patina leatherette textured background, single line border and a concealed mounting.



SONDROL'S

Aluminum Double Sided

Plaque 32" x 16" x 1 1/2"

Mural Script raised lettering, satin finish, multi-level, hand highlighted background, single line



GREAT SEAL OF THE STATE OF MINNESOTA

Bronze Plaque - 34"

Diameter

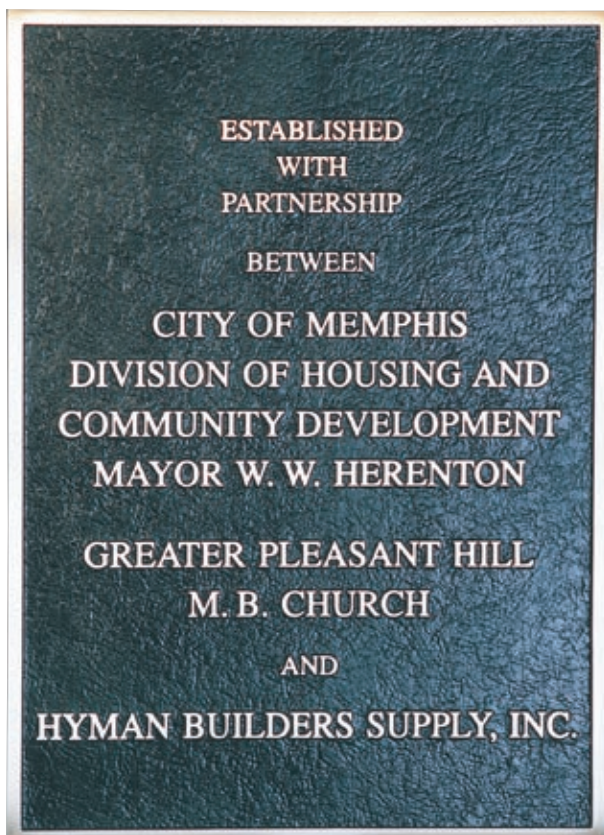
Raised lettering and graphics, satin finish, dark oxidized leatherette textured background, single line border and a concealed mounting.



PRAIRIE WEST GOLF COURSE

Bronze Plaque - 20" x 28"

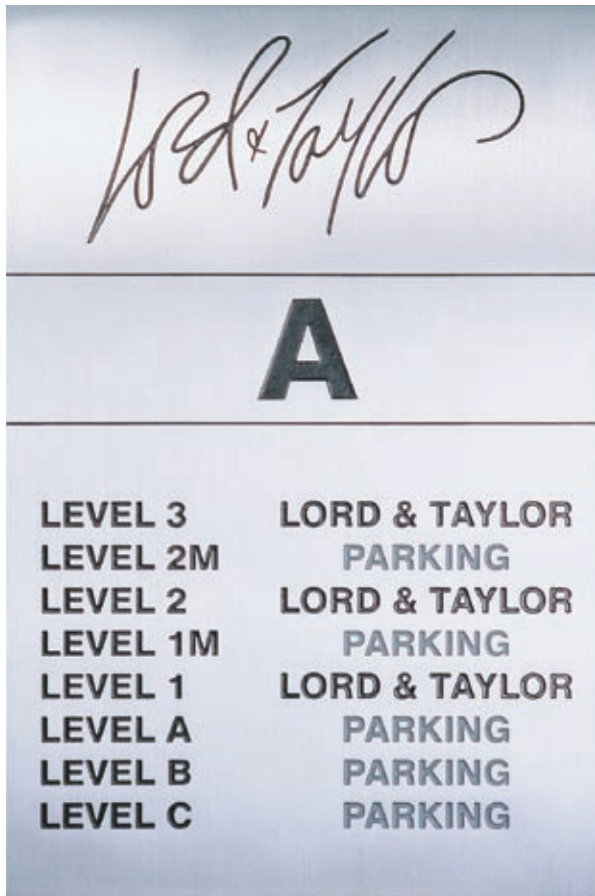
Raised custom graphics and lettering, satin finish, multi-color leatherette textured background, single line border and a single post mounting.



CITY OF MEMPHIS

Bronze Plaque - 16" x 22"

Times Roman raised lettering, satin finish, dark oxidized leatherette textured background, single line border and a concealed mounting.



LORD & TAYLOR

Aluminum Plaque - 24" x 36"

Satin aluminum surface with recessed lettering and logo color filled with a medium gray and black, straight edge border and a concealed mounting.

Plaque Prices

All prices below are for plaques using our standard border designs, letter styles and sizes are shown in our catalog, and the concealed mounting method. If customer or architect does not furnish layout and specs and Metal Arts must design the plaque, there will be a 60 cents per square inch net design charge. Smallest letter allowed is 1/4".

	Aluminum	Bronze
Under 100 sq. inch	\$200.00 Min.	\$290.00 Min.
100 thru 1500 sq. inch . . .	\$2.00 sq. inch	\$2.90 sq. inch
1500 thru 3000 sq. inch . .	Request Quote	Request Quote

Extra Charges

Excess lettering over one character per square inch add \$1.20 per character.

Rosette type mounting hardware add \$65.00.

Alumilited finish add 15% - Duranodic finish add 25%.

Items requiring a factory quotation are as follows: Emblems, art work, designs, special numerals including those superimposed around lettering, incised or engraved lettering and irregular shapes or fraction sizes.

Drawing will be submitted for final approval at no extra charge. If major changes in format are required after submittal, there will be an extra charge for remaking pattern based on actual labor cost involved. Plaque orders cancelled after drawing are submitted for approval will be charged a minimum 50% of original cost.



DEPARTMENT OF THE NAVY

Aluminum Plaque - 48" x 24"

Customer supplied artwork in a tri-level, multi-color enamel finish, leatherette textured background, single line border and a concealed mounting.

Fonts

ANTIQUE OLIVE

Regular, Regular Italic, Bold, Bold Italic
 ABCDEFGHIJKLMNOPQRSTUVWXYZ
 abcdefghijklmnopqrstuvwxyz
 1234567890

AVANT GARDE

Regular, Regular Italic, Bold, Bold Italic
 ABCDEFGHIJKLMNOPQRSTUVWXYZ
 abcdefghijklmnopqrstuvwxyz
 1234567890

BOOKMAN

Regular, Regular Italic, Bold, Bold Italic
 ABCDEFGHIJKLMNOPQRSTU
 VWXYZ
 abcdefghijklmnopqrstuvwxyz
 1234567890

BRUSH SCRIPT

Regular
ABCDEFGHIJKLMN OPQRSTUVWXYZ
VWXYZ abcdefghijklmnopqrstuvwxyz
 1234567890

CLARENDON

Regular, Regular Italic, Bold, Bold Italic
 ABCDEFGHIJKLMNOPQRSTU
 VWXYZ abcdefghijklmnopqrstu-
 vwxyz 1234567890

COMMERCIAL SCRIPT

Regular
ABCDEFGHIJKLMN OPQRSTUVWXYZ
VWXYZ abcdefghijklmnopqrstuvwxyz
 1234567890

EUROSTILE

Regular, Regular Italic, Bold, Bold Italic
 ABCDEFGHIJKLMNOPQRSTUVWXYZ
 abcdefghijklmnopqrstuvwxyz
 1234567890

FRANKLIN GOTHIC

Regular, Regular Italic, Bold, Bold Italic
 ABCDEFGHIJKLMNOPQRSTUVWXYZ
 abcdefghijklmnopqrstuvwxyz
 1234567890

FRIZ QUADRATA

Regular, Regular Italic, Bold, Bold Italic
 ABCDEFGHIJKLMNOPQRSTUVWXYZ
 abcdefghijklmnopqrstuvwxyz
 1234567890

FRUTIGER

Regular, Regular Italic, Bold, Bold Italic
 ABCDEFGHIJKLMNOPQRSTUVWXYZ
 abcdefghijklmnopqrstuvwxyz
 1234567890

FUTURA

Regular, Regular Italic, Bold, Bold Italic
 ABCDEFGHIJKLMNOPQRSTUVWXYZ
 abcdefghijklmnopqrstuvwxyz
 1234567890

GARAMOND

Regular, Regular Italic, Bold, Bold Italic
 ABCDEFGHIJKLMNOPQRSTU
 VWXYZ abcdefghijklmnopqrstuvwxyz
 1234567890

GOUDY

Regular, Regular Italic, Bold, Bold Italic
 ABCDEFGHIJKLMNOPQRSTUVWXYZ
 abcdefghijklmnopqrstuvwxyz 1234567890

GILL SANS

Regular, Regular Italic, Bold, Bold Italic
 ABCDEFGHIJKLMNOPQRSTUVWXYZ
 abcdefghijklmnopqrstuvwxyz 1234567890

HELVETICA

Regular, Regular Italic, Bold, Bold Italic
 ABCDEFGHIJKLMNOPQRSTUVWXYZ
 abcdefghijklmnopqrstuvwxyz
 1234567890

KABEL

Regular, Bold
 ABCDEFGHIJKLMNOPQRSTUVWXYZ
 abcdefghijklmnopqrstuvwxyz 1234567890

NEW BASKERVILLE

Regular, Regular Italic, Semi Bold,
 Semi Bold Italic
 ABCDEFGHIJKLMNOPQRSTU
 VWXYZ abcdefghijklmnopqrstuvwxyz
 1234567890

OPTIMA

Regular, Regular Italic, Bold, Bold Italic
 ABCDEFGHIJKLMNOPQRSTUVWXYZ
 abcdefghijklmnopqrstuvwxyz
 1234567890

PALATINO

Regular, Regular Italic, Bold, Bold Italic
 ABCDEFGHIJKLMNOPQRSTU
 VWXYZ abcdefghijklmnopqrstu
 vwxyz 1234567890

SOUVENIR

Regular, Regular Italic, Bold, Bold Italic
 ABCDEFGHIJKLMNOPQRS
 TUVWXYZ
 abcdefghijklmnopqrstuvwxyz 1234567890

TIMES

Regular, Regular Italic, Bold, Bold Italic
 ABCDEFGHIJKLMNOPQRSTU
 VWXYZ abcdefghijklmnopqrstuvwxyz
 1234567890

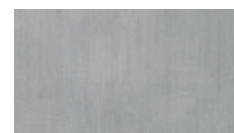
ZAPF CHANCERY

ABCDEFGHIJKLMN OPQRSTU
VWXYZ abcdefghijklmnopqrstu
vwxyz 1234567890

Finishes



Natural Aluminum



Polished Aluminum



Gun Metal Grey



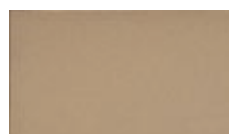
Dark Bronze



Dark Brown



Dark Oxidized



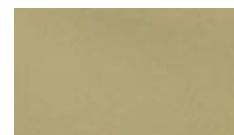
Natural Bronze



Satin Bronze



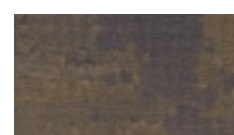
Verdi Gris Patina



Natural Brass



Satin Brass



Light Oxidized

Variations in color and finishes can occur.

■ Aluminum is available in painted finishes, almost any color, natural (sandblasted) or the anodized finishes - clear, black, gold, light bronze, medium bronze, and dark bronze.

■ Bronze and brass are available in painted finishes, almost any color, natural (sandblasted), patina and the standard dark & light oxidized background choices.

■ The raised surface on Metal Arts plaques are satin polished. As with all other items there may be other requirements. Metal Arts will produce and finish to your specifications. Special finishes may create additional costs, request a quote.

Textures

Metal Arts offers our standard leatherette and pebble background textures. Other textures are available upon request.



Leatherette



Pebble

Plaque Materials

Rosettes

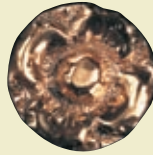
Shown below are the standard rosette designs and sizes. These are available in brass, bronze, white bronze and aluminum to match finishes. Rosette type mounting hardware add \$60.00.



1-3/8"



1-1/8"



3/4"



5/8"



7/8" Star



7/8 Prismatic

Mounting Methods

Concealed mounting is the standard method of mounting, unless otherwise specified. When using rosette mountings, Metal Arts will provide the appropriate size rosettes and hardware-mounting surface required. The following plaque mounting methods will accommodate most types of plaques.

Concealed Mounting

Threaded rods, mounted on back of tablet, placed into cement filled holes, providing a concealed fastening.



Hollow Background Mounting

Installation using toggle bolts with rosettes. (For hollow tile or drywall.)



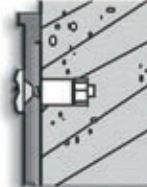
Wood Mounting

Installations in wood using wood screws and rosettes.



Masonry Mounting Ornamental

Rosettes covering heads of expanding masonry anchors.



Custom and Ornamental Designs



Bas Relief: (left & right) These are sculptured portraits, logos and insignias reproduced in clay by skilled artists, with the image sand casted in your choice of metal.

These items have a three dimensional face surface and the back side is a flat surface, the items are applied to a plaque background or used as individual pieces. Photographs and/or camera ready artwork is required. Call for quote.



Bas Relief sculpture



Flat Relief sculpture



Photo Etching

Flat Relief: (upper center) This is a two level process where the face surface of a portrait, logo or insignia are on the same level as the letters and borders on a plaque. This is an economical method to achieve a similar effect to what the bas relief method offers. Digital camera ready artwork is required. Call for quote.

Photo Etching: (right and upper right) This process takes an actual photograph and the image is acid etched into a thin sheet of metal, the same material as the plaque is made from. The results are a photo on metal instead of paper. This is a very detailed and delicate method with a shallow etch and therefore it is not recommended for exterior use. Call for quote.

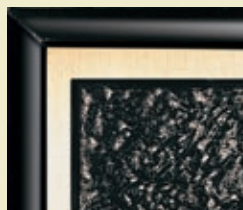


Border Styles

Metal Arts offers five standard border styles. A frontal view of each border design is shown below. Other border styles are available upon request. Contact Metal Arts for quotes and questions.



Bevel Border



Flat Band Bevel Border



Double Line Border



Single Line Border



Straight Edge Border

Letter and Plaque Accessories



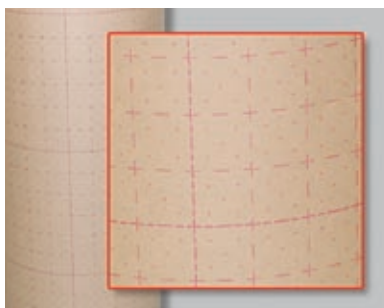
Aluminum Studs

10-24 x 2"	18¢
10-24 x 3"	22¢
10-24 x 4"	32¢
1/4" x 3"	27¢
1/4" x 4"	50¢

Stainless Steel Studs

6/32 x 2"	.22¢
6/32 x 4"	.65¢
10-24 x 11/4"	.18¢
10-24 x 2"	.32¢
10-24 x 3"	.56¢
10-24 x 4"	.81¢
10-24 x 5"	.81¢
10-24 x 6"	.87¢
1/4" x 3"	.56¢
1/4" x 4"	.87¢
1/4" x 5"	1.06¢
1/4" x 6"	1.22¢
Stud Anchor 1/4" x 2-1/4"	\$1.81
S.S. U Bracket 1-1/2"	\$3.12
S.S. U Bracket 2"	\$3.50

Plaque Drawing	.50 / sq. inch
Plaque Negative	.55 / sq. inch
Plaque Polymer	1.30 / sq. inch



Template Paper

(48" width) \$3.25 per ft.



Stainless Steel U-Bracket

1-1/2"	\$1.90
2"	\$2.15

Stud Anchor

1/4" X 2-1/4"	\$1.10
---------------	--------



Spacers

1/4"	.32¢	1"	.45¢
3/8"	.32¢	1-1/4"	.60¢
1/2"	.40¢	1-1/2"	.60¢
5/8"	.40¢	1-3/4"	.68¢
3/4"	.45¢	2"	.75¢



Adhesive

E-6000 (1.0 oz.)	\$7.25
E-6000 (3.7 oz.)	\$9.65
E-6100 (10.2 oz.)	\$16.50
NP-1 for E.I.F.S.	
(drivit) (10.2 oz.)	\$15.75

Minimum Charge \$50.00 net Applies to all items and all orders

Metal Arts, Division of L & H Manufacturing Co., offers you their complete facilities in its new modern plant as well as the services of our highly skilled craftsmen to give you the finest quality letter in standard or custom styles of bronze, yellow brass, or aluminum in a large variety of finishes. Our design department can also supply you with any custom styles of letters or logos designed from artwork provided by you. For further information contact Metal Arts.



410 6th Street S.E.
P.O. Box 639
Mandan, North Dakota 58554

Phone: (701) 663-6535 Toll Free: (800) 237-8069
Fax: (701) 663-0401 Toll Free: (800) 522-7091
web site:

Factory Representative